



**Moisture and Nutrient  
Management System  
for the 21st century**

## ***STP/STPS Series Installation Instructions***



**Prescription Tillage Technology, LLC.**

**1735 E. Main Street**




**Lamoni, Iowa 50140**



**712-357-1149**

**Prescriptiontillage.com**

## Safety

A brief description of signal words that may be used in this installation brochure:



<b>Note</b>	Used to address safety practices not related to personal injury.
 <b>Caution</b>	Indicates a potentially hazardous situation that, if not avoided, may result in minor or moderate injury. It may also be used to alert against unsafe practices.
 <b>Warning</b>	Indicates a potentially hazardous situation that, if not avoided, could result in serious injury or death. It may also be used to alert against unsafe practices.
 <b>Danger</b>	Indicates an imminently hazardous situation that, if not avoided, will result in serious injury or death. This signal word is to be limited to the most extreme situations.

	<b>! Danger</b>
	Consult your implement and tractor operator's manual for correct and safe locking position of the unit in the upward or raised position.  <b>FAILURE MAY RESULT IN PERSONAL INJURY OR DEATH.</b>
	<b>! Danger</b>
	Do not ride on top of the planter unit, serious injury or death will occur.



## Danger

Servicing machine in the upward or raised position; position locking devices in proper position and or install safety stand to prevent accidental drop or fall and injury.

	 <b>Warning</b>
<div style="background-color: #f4a460; padding: 5px; text-align: center;">  <b>WARNING</b> </div> <div style="text-align: center; margin-top: 10px;">  <p><b>SAFETY SHOES REQUIRED</b></p> </div>	<p>When handling blades wear protective footwear such as steel toed boots. No open toed shoes.</p>
<div style="text-align: center;">  <p><b>PINCH POINT</b> CAN CAUSE SEVERE PERSONAL INJURY</p> </div>	 <b>Warning</b>
<div style="background-color: #f4a460; padding: 5px; text-align: center;">  <b>WARNING</b> </div> <div style="text-align: center; margin-top: 10px;">  <p><b>Sharp edges</b> Watch your fingers</p> </div>	 <b>Warning</b>
	<p>Blades are sharp, wear leather gloves when handling and installing.</p>



# STP and STPS True-V Installation Instructions:

**Note: Always View from the Rear of the Planter for Left and Right Sides**

For: Kinze, John Deere, Harvest International,  
Horsch, and White-Precision:

**WARNING: Blades are sharp use leather gloves and use caution.**

- A. Raise planter off the ground and secure with **safety lock** and **safety stand**.
- B. Remove gauge wheel arms.
- C. Remove scrapers.
- D. Remove existing blades.



**Note:** Blades should be equally spaced on each side of the shank.

**Part Number Example: STP0015.00=[OD]000000L=[Side]**

E Use 1 3/4 "x 5/8 "R or L hand threaded bolts for installation of double roller bearing hub.  
**WARNING:** Left hand side of the unit uses left hand threads. Right hand side of the unit uses right hand threads.

## STP Blade Installation; Standing behind the planter

Install the **STP 15.00" Left** and mate the **STP 14.75 Right** on the **Left** row units. Install the **STP 15.00" Right** and mate the **STP Series 14.75" Left** on the **Right** row units.

## STPS Blade Installation; Standing behind the planter

Install or **mate** the **STPS 15.00" Left** with the **STPS 15.00" Right** on each Row unit.

1. When mixing **OEM** blades and **STP** series blades; Lower seed depth setting around **1/4" for the STP** and **1/8" for the STPS**. Inspect seed depth.
2. The **STP-STPS** Series may require more down pressure vs the OEM blades in heavy moist stubble, wheel track compaction and certain soil conditions. PTT recommends **450 lbs of minimum Down pressure capability**. Down pressure requirements should be checked periodically.

## STP-STPS Series True-V Installation Instructions:

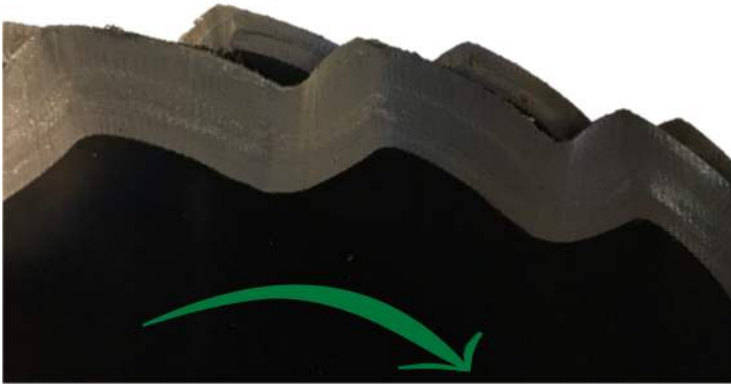
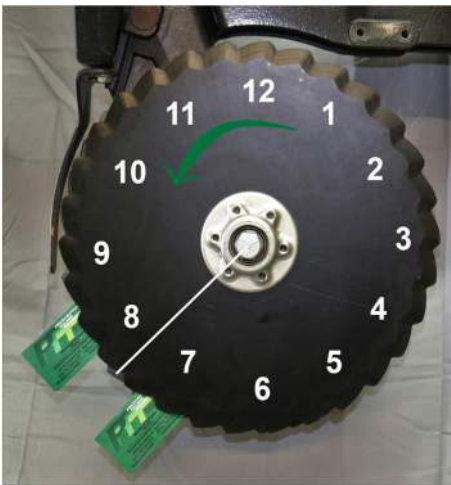


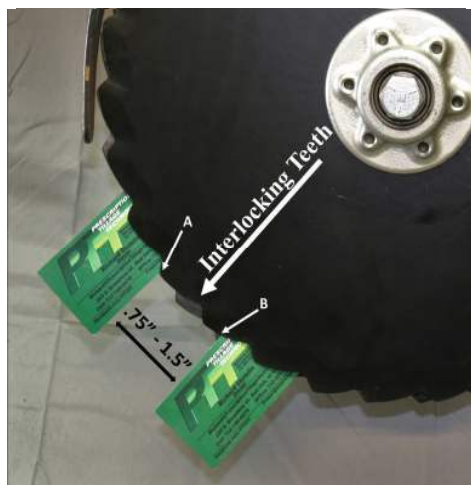
Figure1



Right Hand [Figure 2]



Left hand side  
[Figure 3]



Interlocking Teeth  
[Figure 4]



Rotating Hub Boss  
[Figure 5]

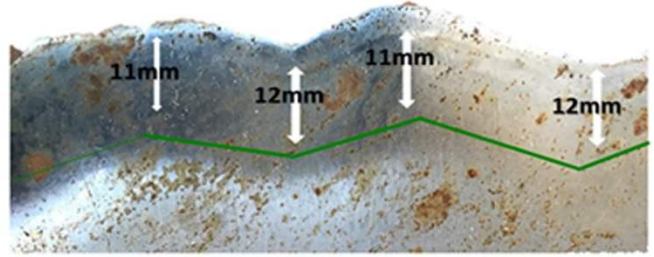
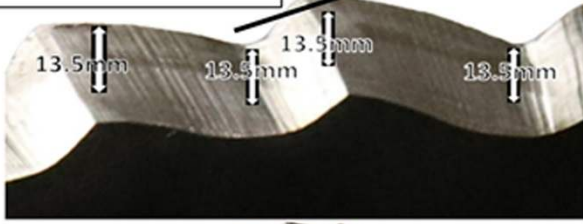
E. Position teeth in interlock contact (**Figure 1, 3 and 4**), at the **4:30** position (**Figure 2**) on the **right-hand** side or **7:30** position (**Figure 3 and 4**) on the **left-hand** side. **USING TWO BUSINESS CARDS POSITION BLADE MATING CONTACT AT .75" - 1.5" (1.905cm - 3.81cm)(Figure 4)**. **Using hub bosses; (figure 5) Rotate blades in opposing direction with resistance of 2-5 ft-lbs during blade rotation.**

**Note: Blades have an inside bevel allowing blade mating. Smaller blades rotate faster than larger blades. Out of spec pre-load may cause pre-mature wear. When rotating blades use hub bosses to protect from injury. (figure 5)**

F. As blades wear, blades may need to be adjusted to maintain blade contact. **Blades should be replaced at 14.25" Outside Diameter.**

G. **Figure 2:** Depth wheels should **make blade to depth wheel contact at the 4:00-5:00 position**, preventing soil build up between blade and depth wheel, lessening row plugging. Reinstall scrapers and gauge wheels assemblies. Lift Gauge wheel assembly **1" - 2" [simulating planting depth]**. Pull Gauge wheel assembly outward or away from True V Blade. Rotate Depth wheel in forward direction. **Depth wheel should make light or constant contact with True V blade**

0.75mm Tooth Tip wear is normal



**NEW OD 15.15"**  
**13.5mm Tooth Bevel**  
**13.5mm Fillet Bevel**

**NEW**



**STP**  
**Minimum OD Spec is 14.25"**

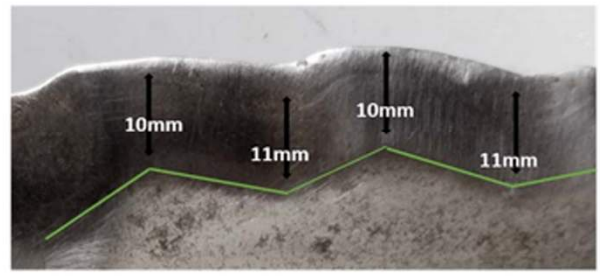
**11mm Tooth Bevel**  
**12mm Fillet Bevel**

**USED**

*The STP Blade maintains a Bevel and a Fillet at or out of OEM specifications Maintaining Cutting and Soil Flowing Action*



**New OD 15.15"**



**Replacement OD Spec 14.25"**

# STP Series Soil Application Chart

				
	STP	STPS	STPF	STV
Soils CEC's	18 CEC or less	*	*	*
	18 CEC - 40 CEC	*	*	*
Rock Conditions	Low	*	*	*
	Sharp Gravel /Shale	*	*	*
	Very Rocky	*	*	*
Minimum Required Planting Depth	1/4" - Full	*	*	*
	1/2" - Full	*	*	*
	1" - Full	*	*	*
	Green Plant	*	*	*
Seeding Practice	Stripper Stubble/ Cover Crop	*	*	*
	No-Till	*	*	*
	Fall Tillage <b>ONLY</b>	*	*	*
	Minimum Till	*	*	*
	Conventional Till	*	*	*
Speed	Slow	*	*	*
	Medium	*	*	*
	High	*	*	*

\* = Applicable with management